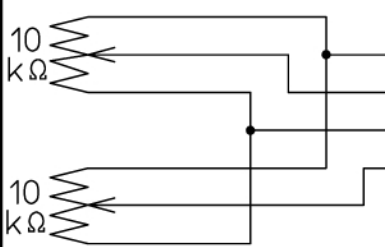


① IRIS CABLE
(VIDEO CONTROL)

- (+) RED INPUT VOLTAGE
- (-) BLACK GROUND
- WHITE VIDEO SIGNAL
- GREEN REMOTE CONTROL

② MOTOR CABLE

- (+) GREEN FOCUS NEAR
- (+) BLACK FOCUS FAR
- (+) YELLOW ZOOM IN
- (+) RED ZOOM OUT



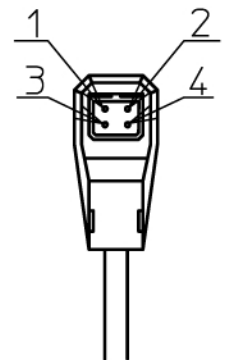
- (+) BROWN POT. SUPPLY
- BLUE FOCUS ERROR
- (-) WHITE POT. RETURN
- GRAY ZOOM ERROR

SPECIFICATION

SPECIFICATION		FOR 1/1.8" 1/2" 1/3" MEGA CAMERA	
1. USE		FOR 1/1.8" 1/2" 1/3" MEGA CAMERA	
2. FOCAL LENGTH		f = 8 ~ 240 mm	
3. IRIS RANGE		F = 1.7 ~ 22	
4. IMAGE SIZE		$\phi 9$ (7.2 x 5.4)	
5. BACK FOCAL LENGTH		20.5 mm in air	
6. FLANGE FOCAL LENGTH		17.526 mm in air	
7. FOCUS RANGE		$\infty \sim 1.8$ m	
8. FIELD ANGLE	DIA.	(W) 59.6°	(T) 2.17°
	HOL.	48.6°	1.75°
	VER.	37.0°	1.32°
9. FIELD OF VIEW AT M.O.D.	DIA.	1878 mm	64.9 mm
	HOL.	1508 mm	52.3 mm
	VER.	1128 mm	39.3 mm
10. DISTORTION (TV)		-1.3 %	0.6 %
11. CLEAR APERTURE		FRONT 81 ϕ	REAR 18 ϕ
12. EXIT PUPIL POSITION		-401.5 mm	(format)
13. WEIGHT		1700 g	

DC (DIRECT CONTROL)

DRIVE COIL	RESISTOR COLOR	190 Ω (20° C) RED(+) 3pin BLACK 4pin
BRAKE COIL	RESISTOR COLOR	1150 Ω (20° C) YELLOW(+) 2pin GREEN 1pin
DRIVE VOLT.	OPEN	+4V
	CLOSE	0V W/CLOSING SPRING



尺度	1/1	承認	製
機種名	1/1.8" 8-240mm/F1.7		
機種番	LMZ0824AMPDC-XF		