

22X SUPER-MOTORIZED AUTO FOCUS ZOOM LENS

TM22Z1022GAIDCPN-iAF f = 10-220mm F2.2 AUTO FOCUS GALVANO DC IRIS, Preset

SPECIFICATION

MODEL NUMBER		TM22Z1022GAIDCPN-iAF	
OPERATION	IRIS	DC IRIS (Galvano)	
	FOCUS	MORTORIZED · PRESET	
	ZOOM	MORTORIZED · PRESET	
FOCAL LENGTH		10-220mm	
IMAGE FORMAT		1/2"	
APERTURE RANGE		F2.2-360	
ANGLE OF VIEW	DIAGONAL	W41.99°	T2.17°
	HORIZONTAL	W34.12°	T1.74°
	VERTICAL	W25.90°	T1.31°
M.O.D.		1.8m	
FILTER SIZE		M67.0mm P=0.75	
DIMENSIONS		W80.0xH121.0xL158.7mm	
WEIGHT		APPROX 1250g	
OPERATING TEMPERATURE RANGE		-10°C - 45°C	
MOUNT		C	

FOCUS/ZOOM

	FOCUS	ZOOM	2X EXTENDER
INPUT VOLTAGE	DC6V~DC12V		
CURRENT CONSUMPTION	40mAOR LESS	50mAOR LESS	40mAOR LESS
MOTORIZATION SPEED(12V)	APPROX.6 SEC.	APPROX.4 SEC.	APPROX.2 SEC.

AUTO FOCUS

INPUT VOLTAGE	DC12 ± 0.5V TBR mA
INPUT SIGNAL	VBS OR CVBS SIGNAL (NTSC or PAL)
CURRENT CONSUMPTION	IN AF WORKING: 300mA OR LESS, IN AF NOT WORKING: 140mA OR LESS
AF ON/OFF	AF ON:Low/0V, AF OFF:High/2-12V AF ON < or =1Sec: TEMPORARY AUTO FOCUS AF ON > 1Sec: CONSTANT AUTO FOCUS
OUTPUT OF AF CONDITION	AF DRIVE:Low/0V, AF STOP: OPEN COLLECTOR

TEMPORARY AUTO FOCUS: AF becomes OFF(High/2-12V) after focusing by auto focus function.
When the time of AF ON (Low/0V) input by a controller is 1 second or less, the focusing work is automatically stopped. (AF becomes OFF.)
If AF ON is input by the controller for 1 second or less again before completing the focusing, the focusing work is stopped. (AF becomes OFF.)

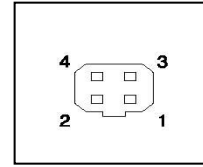
CONSTANT AUTO FOCUS: AF is remained ON (Low/0V) till AF is back to OFF(High/2-12V) by a controller.
The time of AF ON (Low/0V) input by a controller is more than 1 second, AF does not become OFF(High/2-12V) even though focusing by auto focus function is completed.

WIRING

IRIS CABLE

GALVANO AUTO IRIS (DC)

CABLE COLOR	CONNECTION	PIN No
RED	DAMPING COIL-	1
BLACK	DAMPING COIL+	2
WHITE	DRIVING COIL+	3
GREEN	DRIVING COIL-	4



•DC IRIS LENS
CONNECTOR
4 PIN CONNECTOR
JEITA E4-191J-100:

DIRVE CABLE

FOCUS/ZOOM/BUILT-IN x2 EXTENDER

FOCUS	CABLE COLOR	PIN NO	POLARITY	DIRECTION
FOCUS	No1 BLACK	1	+	INF.
	No2 RED	2	+	NEAR
ZOOM	No3 WHITE	3	+	TELE
	No4 GREEN	4	+	WIDE
-	-	5		
FOCUS POT.WIRE	No6 BLUE	6	POT SUPPLY	Resistance 5K Ω
ZOOM POT.WIRE	No7 GRAY	7	POT SUPPLY	($\pm 5\%$) 1W

*POWER (DC5V) IS SUPPLIED FROM INSIDE OF LENS BODY

	-	8		
AF ON/OFF	Brown	9		
OUTPUT OF AF CONDITION	WHITE/ BLACK	10		
NC	WHITE/ GREEN	11		
NC	WHITE/ YELLOW	12		
		13		
		14		
GENERAL GROUND	PURPLE	15		

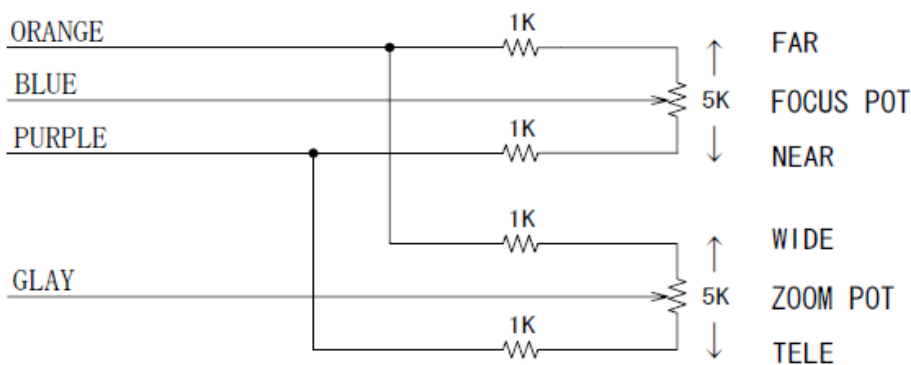
AUTO FOCUS POWER CABLE

CABLE COLOR	CONNECTION
RED*	POWER(DC12 \pm 0.5V)
BLACK*	GENERAL GROUND

*THIS TWO CABLES ARE CONNECTED ON 2PIN CONNECTOR: HIROSE HR-10A-7R-4P

PRESET(POTENTIO wiring)

*POWER (DC5V) IS SUPPLIED FROM INSIDE OF LENS BODY



APPEARANCE

