

Parameter of Lens

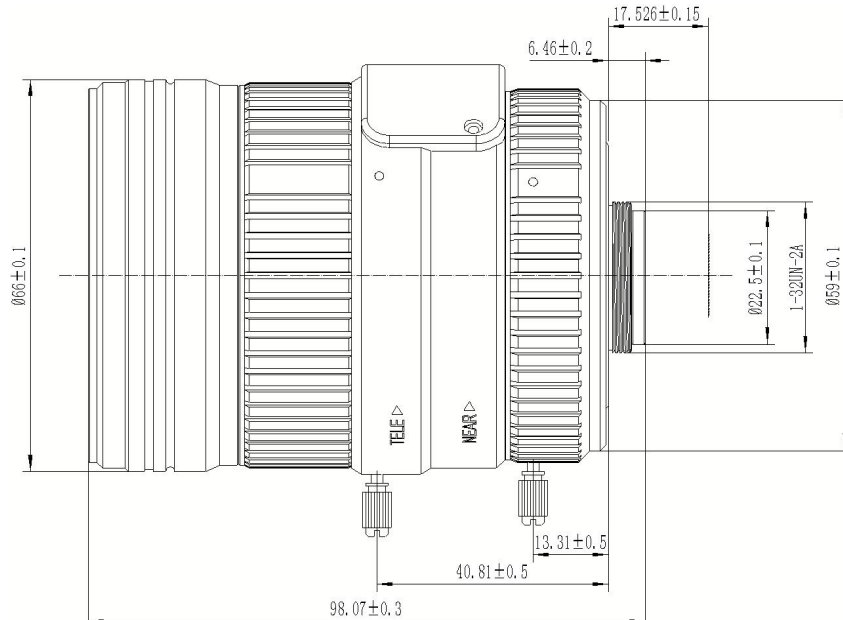
Model:

BLV1P1236MP8-IR



Resolution	8 MegaPixel						
Image format	1"						
Focal length	12~36 (±5%) mm						
Aperture	F1.6±10%						
Mount	C						
Field Angle D×H×V(°)±5%	°	1		2/3		1/2	
	D	67.2	28.6	47.3	19.3	34.7	14
	H	54.6	22.6	38.1	15.4	27.9	11.4
V	41.5	16.8	28.7	11.5	20.9	8.3	
Optical Distortion	-8.0%~-4.86%(1")						
CRA	≤5.82° ≤4.9°						
M. O. D.	2.5m						
Weight	561±2g						
Dimension	Φ66×98.07mm						
Flange BFL	17.526mm(in air)						
BFL	11.6mm(in air)						
MBF	10.97mm(in air)						
IR Correction	Yes(ICR 0.15mm)						
(Operation)	Iris			P-Iris			
	Focus			Manual			
	Zoom			Manual			
Operating temperature	-30°C~+70°C						

Size



Size tolerance (mm) : 0-10±0.2

10-30±0.3

30-120±0.5

Angle tolerance

±2°

P-Iris

Model:

BLV1P1236MP8-IR

一般公差	1级	2级	3级
L≤6	±0.05	±0.1	±0.15
6<L≤30	±0.1	±0.15	±0.2
30<L≤120	±0.15	±0.2	±0.3
120<L≤315	±0.2	±0.3	±0.5
角度公差: ±1'			

CONNECTION DIAGRAM

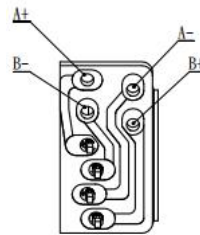
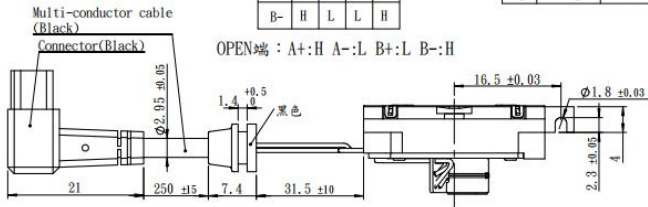


SEQUENCE OF EXCITATION

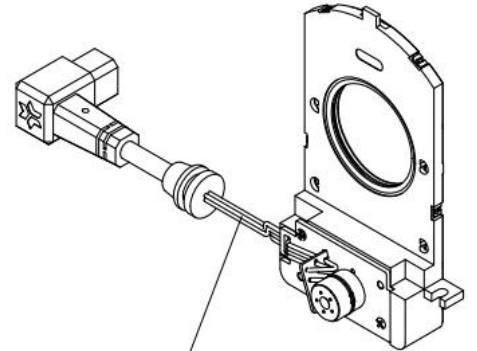
STEP	1	2	3	4
A+	H	H	L	L
A-	L	L	H	H
B+	L	H	H	L
B-	H	L	L	H

NO.	颜色	卷线
1	brown	B+
2	red	A-
3	yellow	A+
4	orange	B-

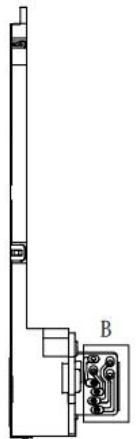
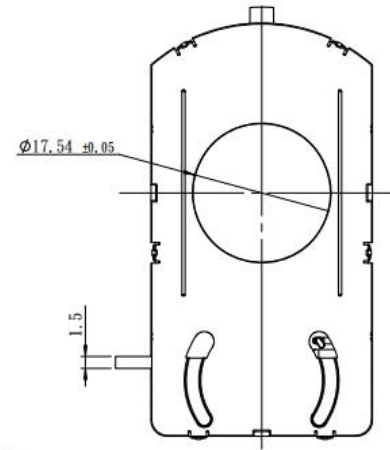
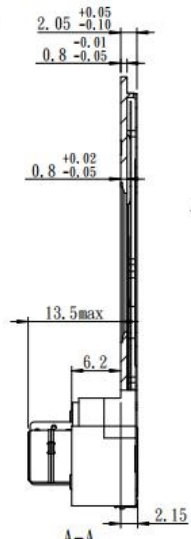
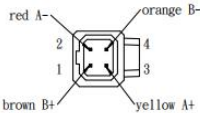
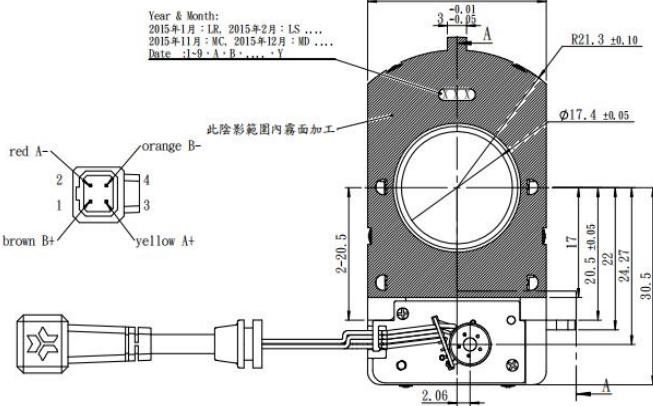
OPEN端: A+:H A-:L B+:L B-:H



B (5 : 1)



导线	φ3.0 4芯线 (绝缘色:黑)
规格	UL 1571 80℃ 30V VW-1
线材	橙黄红褐(材質:PVC)28#



Max. Image Circle	Φ17.4mm	Resistance	30 Ω ±10%, 25℃
Iris Wire	brown	B+	Rated Voltage
	red	A-	DC 4.0V
	yellow	A+	Operating Voltage
	orange	B-	DC 2.7~5V
Dimension	51.8×28×15.65mm	Motor Step Angle	18° ±3° /step
		Output Step Angle	0.845° /step
Reduction Ratio	1:21.3	Continuous Time	30 sec(at 2.7DCV)
		Operating Environment	-30℃~70℃

Step number table

Model:			BLV1P1236MP8-IR		
step	mm2	mm	step	mm2	mm
0	237.787	17.4	42	77.753	9.95
1	237.787	17.4	43	74.097	9.72
2	235.302	17.31	44	70.491	9.48
3	232.509	17.21	45	66.939	9.23
4	229.429	17.1	46	63.444	8.99
5	226.13	16.97	47	60.008	8.74
6	222.644	16.84	48	56.633	8.49
7	218.988	16.7	49	53.323	8.24
8	215.172	16.56	50	50.081	7.99
9	211.204	16.4	51	46.909	7.73
10	207.189	16.25	52	43.81	7.47
11	203.149	16.09	53	40.788	7.21
12	199.088	15.93	54	37.845	6.94
13	195.009	15.76	55	34.984	6.68
14	190.912	15.59	56	32.21	6.41
15	186.801	15.43	57	29.526	6.13
16	182.676	15.25	58	26.935	5.86
17	178.54	15.08	59	24.442	5.58
18	174.395	14.91	60	22.05	5.3
19	170.243	14.73	61	19.765	5.02
20	166.085	14.55	62	17.591	4.73
21	161.924	14.36	63	15.535	4.45
22	157.762	14.18	64	13.602	4.16
23	153.601	13.99	65	11.801	3.88
24	149.444	13.8	66	10.136	3.59
25	145.291	13.6	67	8.606	3.31
26	141.147	13.41	68	7.209	3.03
27	137.012	13.21	69	5.943	2.75
28	132.889	13.01	70	4.806	2.47
29	128.781	12.81	71	3.796	2.2
30	124.689	12.6	72	2.91	1.93
31	120.616	12.4	73	2.146	1.65
32	116.565	12.19	74	1.503	1.38
33	112.537	11.97	75	0.977	1.12
34	108.536	11.76	76	0.566	0.85
35	104.562	11.54	77	0.267	0.58
36	100.62	11.32	78	0.078	0.32
37	96.711	11.1	79	0.005	0.08
38	92.838	10.87	80	CLOSE	0
39	89.003	10.65	81	CLOSE	0
40	85.209	10.42	82	CLOSE	0
41	81.458	10.19	83	~	~

Test Standard			
Model:		BLV1P1236MP8-IR	
Test Items		Test Content	
1	Resolution Test	Test Conditions	$\Phi 16 (>1.5)$ (diameter $>1.5m$)
		Center \geq	160 lp/mm(Wide), 160 lp/mm(Tele, f=3m with RL7035 Relay Lens)
		$\Phi 16\geq$	100 lp/mm(Wide) 100 lp/mm(Tele, f=3mwith RL7035 Relay Lens)
		Image Standard	The image should be clear.
Environment		≤ 1 lux	
2	Appearance	Inside Lens Barrel	60-40: 60 Scratch: The maximum scratch width is allowed to be 0.06mm, scratch length on the first surface $<1mm$, scratch length on other surface $<\Phi/4$. Scratch total length $<\Phi/2$. 40 Bright Spots: (the size of the bright spot is determined by the longest side)The maximum bright spot size is allowed to be 0.4mm, only one in the middle and edge regions. Two bright spots is allowed when the size $\leq 0.2mm$, and the distance must $\geq 1mm$;
		Outside Lens Barrel	The lens barrel has no obvious color difference, scratch, break, deformation; the glue is not allowed to overflow into the effective light path; no word drop, clear writing, the same font size, even spacing, etc;
		Rotation	Feel the rotation back and forth smoothly without jumping, stuck and abnormal sounds,etc
3	Auto Iris	Appearance	Cable and connector of iris have no obvious break, deformation, length of pins must be same.
		Actuation	The optical drive switching speed is slow and even,Do not act too fast, too slowly, or without action;
		Optical drive sensitivity	Use the camera to confirm the light sensitivity of the optical drive, and the response is sensitive and there is no time delay;

Reliability and Environmental Testing

Model:

BLV1P1236MP8-IR

Test Items

Test Content

1

Temperature Cycling Test

Lens is placed on two cycles in the test temperature (-30 ± 3)°C for 1.5 hours and in (70 ± 3)°C for 3 hours separately. Then, the indicators are qualified after placing the lens at room temperature for 24 hours.

2

Damp heat test

Lens is placed in the test temperature (70 ± 3)°C, humidity 85% RH for 48 hours. Then, the indicators are qualified after placing the lens at room temperature for 24 hours.

3

Drop Test

Lens drops from the height of (1 ± 0.1 m) to the concrete ground. After the testing, the indicators are qualified.

4

Vibration Test

Lens vibrates 2h in sinusoidal wave under 1 mm of amplitude and 50Hz of frequency. After the testing, the indicators are qualified.

Packing Specification	
Model:	BLV1P1236MP8-IR

1. After the lens is covered with the cover, attach the internal standard;

2. Put the lens into the lined paper box, and put in the desiccant and instructions;

3. Cover the inner lining cover, pack the carton, and affix the external label;

4. Seal the corrugated box with tape and mark the surface.