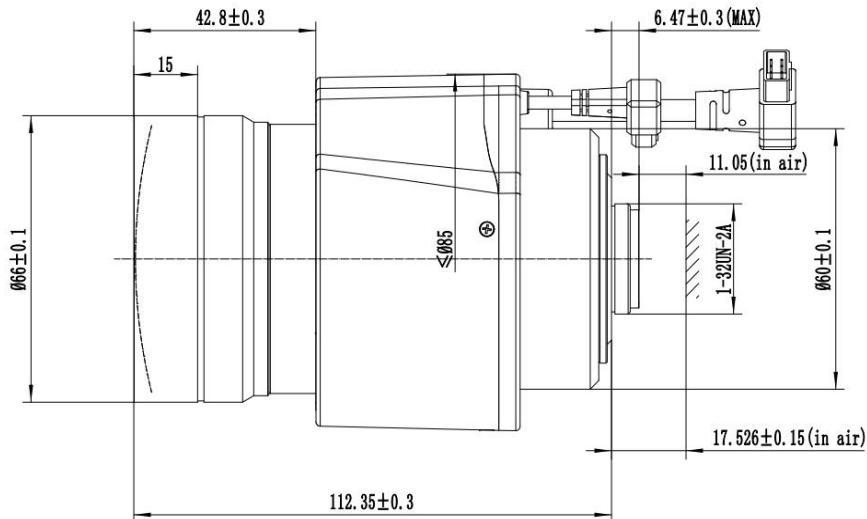


Parameter of Lens

Model:	BLVZ11P1640MP12-IR								
	Resolution		12 MegaPixel						
	Image format		1.1" (φ17.6mm)						
	Focal length		16.5 (W) -38.5 (T) (±5%mm)						
	Aperture		F1.5 (W) -1.55 (T) (±5%mm)						
	Mount		C						
	Field Angle) D×H×V(°) ±5%		1.1" (IMX428)		1" (17:9 IMX305)		1/1.2" (16:9 IMX485)		
			D	60.3	25.3	55.7	23.5	44.4	18.8
			H	50.1	21.2	49	20.7	38.7	16.5
			V	34.4	14.7	25.9	11.1	21.7	9.3
	Optical Distortion		-9.0%	1.20%	-8.0%	0.81%	-5.4%	0.30%	
	CRA		6.1	5.9	6.2	6.4	6.3	7.0	
	Weight		680±5g						
	Coating Range		400-900nm						
	M. O. D.		1.5m (W) -2.5m (T)						
	Dimension		Φ66×112.35mm						
Flange BFL		17.526±0.15mm (in air)							
BFL		12.48mm (in air)							
MBF		11.61mm (in air)							
Relative illuminance		44% (W) φ8.8mm, 43% (T) φ8.8mm							
IR Correction		Yes							
(Operation)	Iris			Piris					
	Focus			Motorized					
	Zoom			Motorized					
Operating temperature		-30°C~+70°C							

Size



Size tolerance (mm) :	0-10±0.2	10-30±0.3	30-120±0.5
Angle tolerance	±2°		

P-Iris

Model:

BLVZ11P1640MP12-IR

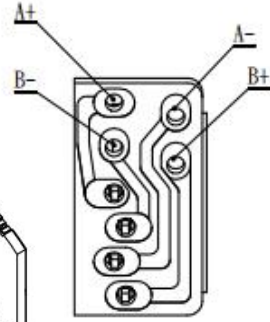
CONNECTION DIAGRAM



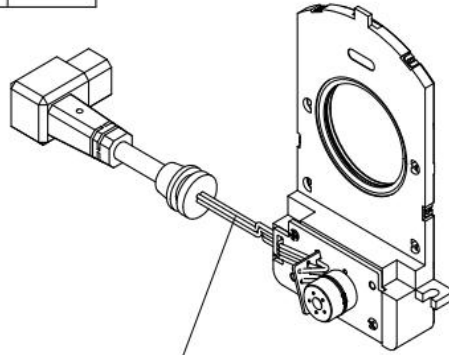
SEQUENCE OF EXCITATION

STEP	1	2	3	4
A+	H	H	L	L
A-	L	L	H	H
B+	L	H	H	L
B-	H	L	L	H

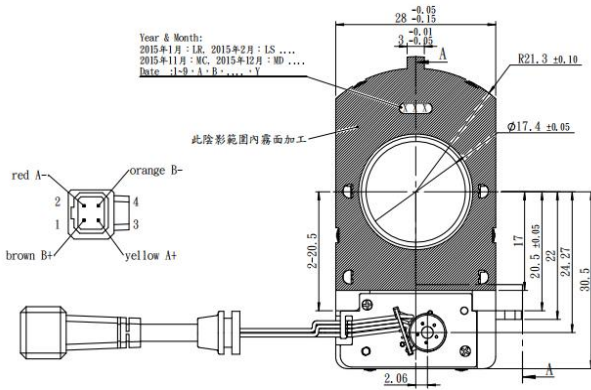
NO.	顏色	卷線
1	brown	B+
2	red	A-
3	yellow	A+
4	orange	B-



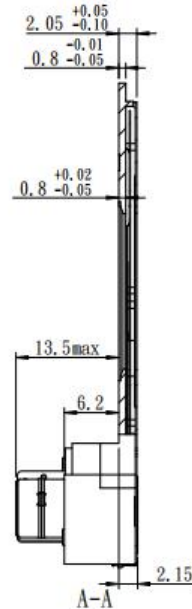
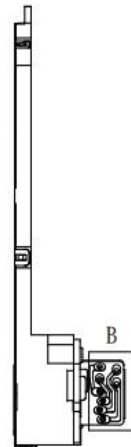
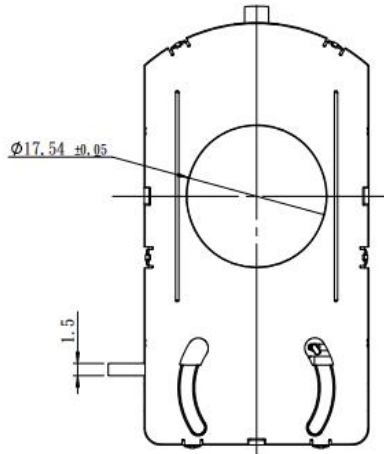
B (5 : 1)



CLOSE端 : A+:H A-:L B+:L B-:H



導線	Φ3.0 4芯線 (線覆色:黑)
規格	UL 1571 80°C 30V VW-1
線材	橙 黃 紅 棕 (材質:PVC)28#



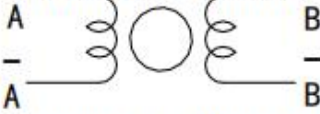
Max. Image Circle	Φ17.4mm	Resistance	30 Ω ±10%, 25°C
Iris Wire	brown	B+	Rated Voltage
	red	A-	DC 4.0V
	yellow	A+	Operating Voltage
	orange	B-	DC 2.7~5V
Dimension		Motor Step Angle	18° ±3° /step
		Output Step Angle	0.845° /step
Reduction Ratio	1:21.3	Continuous Time	30 sec(at 2.7DCV)
		Operating Environment	-30°C~70°C

Motor

Model:

BLVZ11P1640MP12-IR

CONNECTION DIAGRAM

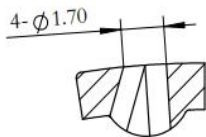
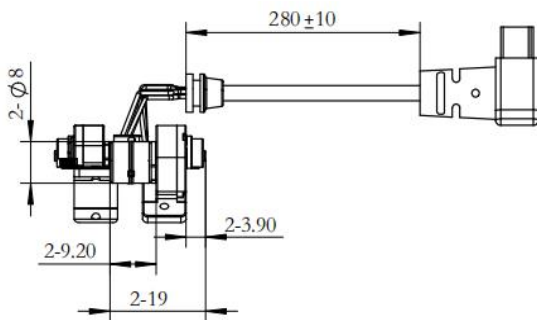
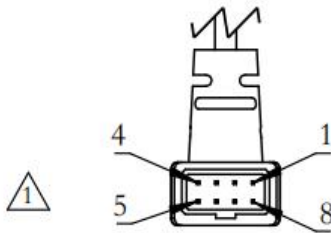
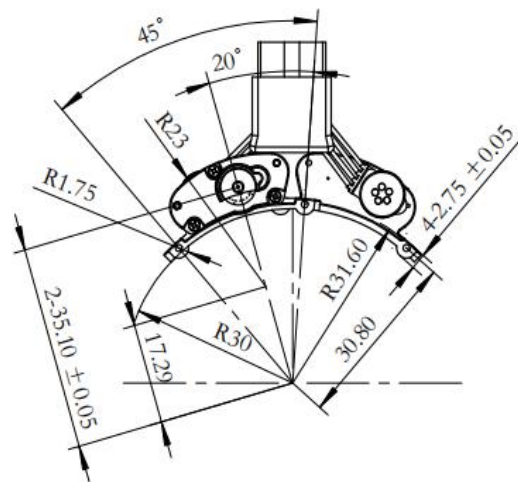
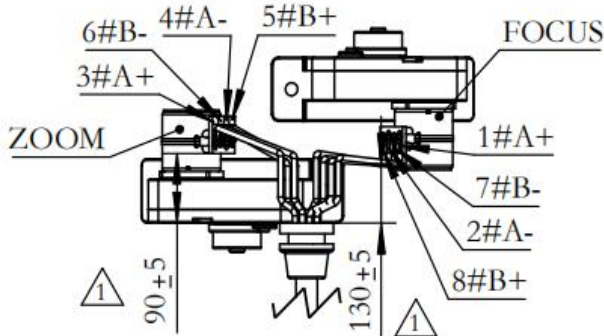
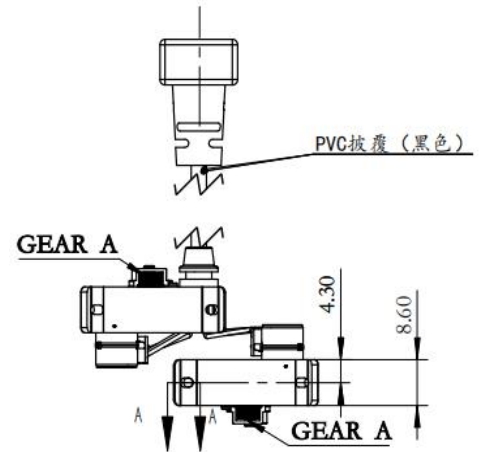


SEQUENCE OF EXCITATION

STEP	1	2	3	4
A	H	H	L	L
\bar{A}	L	L	H	H
B	L	H	H	L
\bar{B}	H	L	L	H

OUTPUT SHAFT ROTATION CW

序号	颜色	脚位
1	黑色	FOCUS A+
2	蓝色	FOCUS A-
3	橙色	ZOOM A+
4	绿色	ZOOM A-
5	黄色	ZOOM B+
6	棕色	ZOOM B-
7	白色	FOCUS B-
8	红色	FOCUS B+



A-A
5:1

NO.	ITEM	PARAMETER	TEST CONDITION
1	RATED VOLTAGE	3.3 V DC	/
2	RESISTANCE	30Ω ± 10%	/
3	PHASES	2 PHASES	/
4	STEP ANGLE	18°/STEP	SINGLE MOTOR
5	EXCITATION METHOD	2 PHASE EXCITATION	/
6	DRIVE MODE	BI-POLAR DRIVE	/
7	GEAR RATIO	80.095:1	/
8	PULL-IN TORQUE	1.2 gf-cm (MIN.)	AT 900 pps, 3.3 V, 2-2 PHASE, SINGLE MOTOR
9	PULL-OUT TORQUE	1.5 gf-cm (MIN.)	AT 900 pps, 3.3 V, 2-2 PHASE, SINGLE MOTOR
10	OUTPUT GEAR TORQUE	90 gf-cm (MIN.)	AT 900 pps, 3.3 V, 2-2 PHASE
12	MAXIMUM STARTING FREQUENCY	1000 pps (MIN.)	AT 3.3 V, 2-2 PHASE
13	MAXIMUM SLEWING FREQUENCY	2000 pps (MIN.)	AT 3.3 V, 2-2 PHASE
14	MIN. STARTING VOLTAGE	DC 2.6 V (MAX.)	AT 900pps 2-PHASE, NO LOAD
15	NOISE	45dB (max.)	AT 900pps 3.3 V, NO LOAD, DISTANCE 10cm
16	INSULATION CLASS	CLASS F FOR COILS	/
17	INSULATION STRENGTH	1mA (MAX.)	100 V AC FOR ONE SECOND
18	INSULATION RESISTANCE	1.0 MΩ (MIN.)	100 V DC
19	OPERATING TEMPERATURE RANGE	-40~+80 °C	/

Reliability and Environmental Testing

Model:

BLVZ11P1640MP12-IR

Test Items

Test Content

1

Temperature Cycling Test

Lens is placed on two cycles in the test temperature (-30 ± 3)°C for 1.5 hours and in (70 ± 3)°C for 3 hours separately. Then, the indicators are qualified after placing the lens at room temperature for 24 hours.

2

Damp heat test

Lens is placed in the test temperature (70 ± 3)°C, humidity 85% RH for 48 hours. Then, the indicators are qualified after placing the lens at room temperature for 24 hours.

3

Drop Test

Lens drops from the height of (1 ± 0.1 m) to the concrete ground. After the testing, the indicators are qualified.

4

Vibration Test

Lens vibrates 2h in sinusoidal wave under 1 mm of amplitude and 50Hz of frequency. After the testing, refocus the lens, the indicators are qualified.